

May Parent Newsletter



Tuesday 2nd May 2023

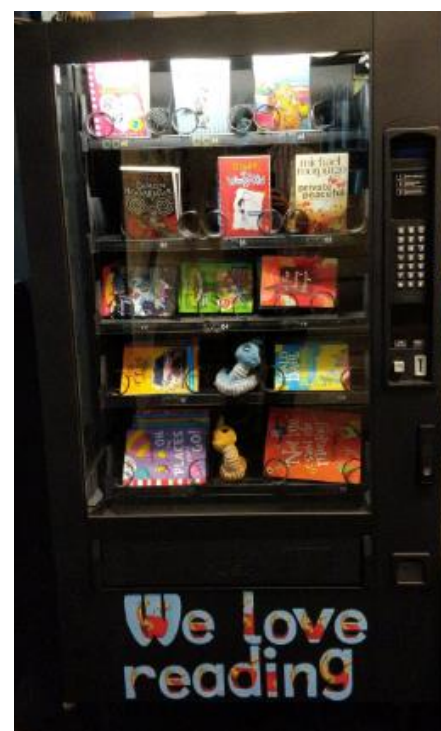
We need you support!

At KPINS our aspiration is for every child to develop a love of reading. As part of our drive to promote that love of reading and motivation we would like to buy a vending machine containing reading books which the children will be rewarded with.

We need to raise £2000 to buy the vending machine so this term we plan to run a range of events to try and meet our target – kicking off with our cake sale this Friday and a community event on Friday 30th June – when we plan to have a number of stalls, games and fun events involving parents and children. We are keen for parent/carers to get involved and supporting us to meet our target. We plan to provide regular updates on the progress we are making toward raising £2,000.

What is coming up in May?

As with every month in school, everyone has their own range of activities, task, deadlines and challenges to be met. This month is going to be a busy one particularly for the Year 2 pupils who over the next couple of weeks and into early June will be involved in Statutory assessment at the end of KS 1. We do not share the timetable for the formal tests and tasks as we conduct them over the weeks but we also do not want to put unnecessary pressure or make the children feel anxious about the assessment process. It is important that the children attend school every day and on time as this could impact on the assessment process as well as missing key learning and recap sessions to support retrieval of learning.



Date	Activity	Year groups involved	
Friday 5 th May	Cake sale	All	Parents to donate cakes to sell as part of fundraising for a vending machine.
	Non- uniform day	All	Children dress up as King's Queen's, Princes and Princesses to commemorate the Coronation.
Monday 8 th May	Bank Holiday for the Coronation	All	School closed.
Thursday 18 th May	Parents Coffee Morning with our Education Lead Mental Health Practitioner	All	Focus will be shared nearer the time.
Monday 22 nd May	Year 1 & 2 achievement assembly	Year 1 & 2	Parents of pupils nominated invited to attend the assembly at 1.05 p.m.
22 – 26 May	Walk to school week	All	Encourage our school community to walk to school / park and walk.
Wednesday 24 th May	Whole school WOW walk	Reception to Year 2	The children will take a talk in their environment and parent/carers will be invited to join.
Friday 26 th May	Non-uniform day	All	Children donate £1 and come dressed in their own clothes. The money raised will go toward our vending machine.
Friday 26 th May	Reception Achievement Assembly	Reception	Parents of pupils nominated invited to attend the assembly at 2.30 p.m.
Friday 26 th May	Last day before Half term	All	At the end of the normal school day the school will close for a week for the half term break from 29 May – 2 June.

This term Mr. Snowden and Miss. Bennett will be hosting Phonic sessions for specific parents of pupils in Years 1 & 2 to support them to work in collaboration with the school in advance of the phonics screening.

Year 1 staff will also continue to work hard to support the children with their reading and phonics as children in Year 1 will be screened on their phonics knowledge and ability to decode real and psydo words (non-real words).

The reception team will be assessing the children against the early learning goals.

Following the May Whitsun half term final judgements will be made and used to write the end of year reports and inform parents/carers on how their child has progressed over the year in line with age related expectation.

Parent Governor Vacancy

Dear Parents and Carers,

Kenmore Park Infant and Nursery school has only one parent governor vacancy remaining on its governing body. It is a great opportunity to get involved in your child's school at a strategic level. We are looking to appoint parent Governors to join our Governing Body who have an interest in education and give of their time to the school. The individual also needs to have an interest in representing the parent community and acting as a voice of the school and parents. Our parent governors are very valuable members of the governing body. We rely on them to help us to keep in touch with what parents are thinking and to help us to decide what is best for all our pupils. They also keep parents informed about the strategic work of the school leadership.

What are you required to do?

- Attend Full Governing Body meetings which are scheduled at 7 p.m. on Wednesday evenings and there is one meeting every half term (max 6 per year). All paperwork is sent out a week in advance of the meeting.
- Join at least one of the subcommittees who meet once each term as a minimum at 7 p.m. on a Wednesday evening at the school.
- You must have skills and areas of expertise and knowledge to support with the strategic planning and vision for the school
- The term of office is 4 years

If you are interested in becoming a parent governor, please collect an application form from the school office. **Complete and return by Tuesday 8th May 2023** ensuring you have details of nominees completed. Where there is more than one parent interested we will hold a ballot.

Recycling school uniforms continues!

Please continue to support us by recycling good condition school uniforms as your child grows out of them. Remember it can help another family who may be finding it hard to purchase uniform items at full price. Please hand your bag of unwanted school uniform and good condition school shoes to a member of the school staff. Every little helps!

School Attendance update & reminder!

When your children start school there is an expectation that they attend school regularly. We recognise that children will occasionally become unwell and need to be absent from school, that is why any child's attendance that falls below 95% is monitored as anything below that will start to raise concerns.

Children services have been working with GP's so that they support schools to promote good attendance and parent should be able to request evidence to support their child's absence in the form of a print out of telephone consultations or in person visits.

Our thanks to all our families who consistently follow the school attendance procedure which is inline with the LA AIM policy.

Remember at the end of every half term we remind parents of when the school holidays commence and when the school term resumes. The law clearly states that if you choose to educate your child in

a British school you are required to comply with the school term time dates and holidays. We will not authorise any pupil absence without evidence. Parents need to be mindful that penalty notices will be issued for absence not substantiated in the correct way. Holiday leave will not be approved in line with the DfE guidance.

Where a child's absence has fallen to an unacceptable rate we will make home visits to check on the welfare of the child, if no one answers the door we will have good cause to assume that the absence is disingenuous. Opportunities will be offered to attend a meeting to discuss the absence and identify support options if these are not taken up we will be left with no other option than to refer to children services under safeguarding and issue penalty notices.

We would remind you that any unauthorised absences over the school year when accumulated can lead to penalty notices too. Some of you may be under the impression that if less than 5 consecutive days leave is taken a penalty notice will not be issued. I would like to correct you on that point as if your child has any other unauthorised absence during the school year these will be added together.

The Moorhouse Road school **gate opens at 8.20 a.m.** and the **entrance locks at 8.50 a.m.** this is because all children are expected to be in class by then for registration at 8.50 a.m. Lessons commence straight away. The **exit gate locks between 8.55- 9 a.m.** to ensure the safety of the children as they start their day.

Getting Your Child to School Really Matters

Did You Know... ?

In a School Year, If Your Child is Late Every Day By...	Your Child Would Have Lost Approximately...	or They Would Have Missed Approximately...
5 Minutes	3.5 Days from School	20 Lessons
10 Minutes	7 Days from School	41 Lessons
15 Minutes	10 Days from School	55 Lessons
20 Minutes	14.5 Days from School	82 Lessons
30 Minutes	22 Days from School	123 Lessons

Please Encourage Punctuality to Maintain Attendance

Which year group has the best attendance and least number of persistent absentism???

Session Attendance Summary (01 Sep 2022 - 01 May 2023)

	Year N2	Year R	Year 1	Year 2	All Years
Attendance	92.32%	93.04%	93.85%	95.30%	93.99%
Authorised	5.47%	5.89%	4.72%	3.81%	4.81%
Unauthorised	2.21%	1.07%	1.43%	0.89%	1.21%
Persistent Absence >=10%	9	23	16	10	58
AEA	0.64%	0.73%	0.23%	0.24%	0.41%
Present	91.68%	92.31%	93.62%	95.05%	93.58%
Lates	0.37%	0.34%	1.02%	0.71%	0.68%

Attendance highlights from the month of April

During the month of April, the following classes have received certificates for the best class attendance each week and then for the overall month: **Pixie Class (Reception)**.

Week beginning	Class	% attendance
17-21 April	Pixie	93.1%
24 – 28 April	Chameleon	98.6%
April	Pixie	95.5%

Talking to the teachers.

Please respect the fact that teachers need to be with their classes at the start of the day and should not be distracted by parents. If you have a question or wish to speak to a teacher at length, then please message them via class dojo and arrange to speak to them at the end of the school day once all other children have been dismissed. We appreciate your support.

Celebrating your child's birthday.

We appreciate that parents will want to acknowledge their child's birthday. **Please be reminded NO SWEETS or CONFECTIONARY!** This is something we have seen a number of parents doing and is in opposition to our aspiration to educate your children to make healthy choices and have good oral hygiene!

We would ask that if you wish to distribute a party pack they contain non-edible items and you hand them yourself to the children as they leave. We have a number of children with life threatening allergies and we wish to avoid compromising their safety. Furthermore, in line with our drive to improve the oral hygiene of the children sweets and confectionary is discouraged.

Alternatively, you could donate a story book to the class with an inscription commemorating your child's special day.

Seminar lessons and parent workshops summer term 2023.

This term our focus turns toward preparing you and your child for the next phase of their learning. This term, opportunities will be provided after half term for parents to attend seminar lessons in the year group their child will be transitioning into from September 2023. Our intention is to provide you with a taster of what is to come for your child and the increased demands and curriculum expectations. We will also be sharing with you how you can help to support your child in preparation for the next stage of their learning journey.

Date	Year group	Activity	Time	Arrangements	Venue
Week beginning 19 th June	Reception & Year 1	Maths transition seminar lesson	9 a.m.	Details to follow.	The school hall.
Week beginning 26 th June	Reception & Year 1	English transition seminar lesson	9 a.m.	Details to follow.	The school hall.

Summer Term 2023

First day of school

Monday 17 April

Half term

Monday 29 May – Friday 2 June

Back to school

Monday 5 June

INSET DAY (Children not in school)

Friday 23 June **(Infant School ONLY)**

Last day of term

Friday 21 July **(finish at 2 p.m. Reception & 2.15 p.m. KS 1)**

A REMINDER THAT WE HAVE A COMPULSARY SCHOOL UNIFORM & PE UNIFORM

It has been noticed that children seem to be coming into school in trainers and other non-black footwear. Please be reminded that there is an expectation that children wear black shoes.



It is parents' responsibility to ensure that their child is wearing the appropriate footwear and school uniform as stipulated in the school prospectus and website.

Also on Wednesday's we require all children in Year 1 and 2 to wear the schools PE uniform which comprises of **Grey joggers (Option of black shorts in the summer) a grey top and black trainers/plimsolls** and **not their own sportswear**. This should not be seen as the school uniform on other days please!



Uniform on Wednesday's only for Years 1 and 2 pupils.

Please remember to make sure and regularly check that your child's name is on all their items including, hats, scarves and gloves.

FREE SCHOOL MEAL ELIGIBILITY CHECK

It is important that parents check their eligibility criteria as a number of parents found themselves to be eligible during lockdown. They were then issued with free school meal vouchers which they could use to purchase food at a supermarket of their choice. It is important that you check as it may be helpful in the event of a second spike!

Parents can check to see if they meet the eligibility criteria by following the instructions below:

Step 1: Login to the following website: <https://pps.lqfl.org.uk> (Free School Meal Eligibility Checker)

Step 2: Click – **Check eligibility**

Step 3: Click – **create an account** (Unless you already have an account in which case you go to return to your account and enter your password)

Step 4: **Create an account**

Step 5: On the drop down menu:

Local authority – select - **Harrow**

School – select – **Kenmore Park Infant & Nursery School HA3 9JA.**

Step 6: Read and accept the privacy notice **by ticking the box at the bottom of the page.**

Step 7: **Enter your details:**

First name

Last name

Your date of birth

Your National Insurance number

Email address

Mobile number

Postcode

Get address: click on your address; house number etc

SUBMIT

Once you have submitted the form you will receive a response in a couple of days confirming your status. If you are eligible, please forward the email to the school on the following email address: office@kpins.harrow.sch.uk

Job Vacancies

We are looking for casual as and when cleaners: working hours 3.30 – 6 p.m. week days only (**no qualifications** required but experience of cleaning employment desirable).



As and When Lunch time leaders (1 hour 10 minutes per day) – are you able to work flexibly between the hours of 11.30 – 1 p.m.

Please visit the school office and request an application form.

As and when SEN support teaching assistants for children that require one to one support from an adult. Some of these children may have complex needs. Hours are flexible and based on the individual child's needs.

School Travel and Parking!

We continue to receive complaints from local residents about parents parking on and across their private drive ways and the zig zag lines in front of the school. I have also been horrified at the number of parents stopping in the middle of the road to drop off their children, putting them at risk of injury from a moving vehicle.

Local residents plan to petition for cameras on the school crossing areas which will mean that parents/carers parking illegally will be automatically caught on camera and issued with fines. A number of you have already been issued with fines by the traffic enforcement camera vehicles patrolling the school, but continue to park illegally when the vehicle is not there. Permanent cameras would remove the need for the patrolling vehicle to an indefinite solution to this issue!

We feel very strongly about how children travel to school and encourage all pupils to walk or scooter to school rather than using the car. This is good for their health and also for the environment – helping to reduce carbon dioxide and pollutions which contributes to the increase in the number of pupils suffering from Asthma! A brisk walk or exercise before work is also a good way to get the brain working too!

We have installed designated pods for parking bikes & scooters in different areas of the school for the convenience of parents. We realise that some children live some distance away from the school and may need to come by car however, we would ask that parents park a little distance away from school and walk/scooter the rest of the route to school.



Help with food

If you are struggling to manage bills and prioritise them over food, then please email the school office and we can help by adding you to our weekly food parcel collection list. We will aim to support you sensitively and confidentially. Email the school office – subject ' Help with food' office@kpins.harrow.sch.uk.